

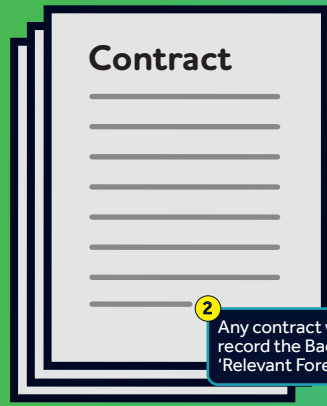
Ofgem NIA Guidance IP Regime Overview



So you are an innovator with an idea that could help transform energy networks...

NIA funding

1 When applying for NIA (Network Innovation Allowance) funding, the Project Registration Information will need to detail the expectations of any 'Foreground IP' that will be generated from the Project.

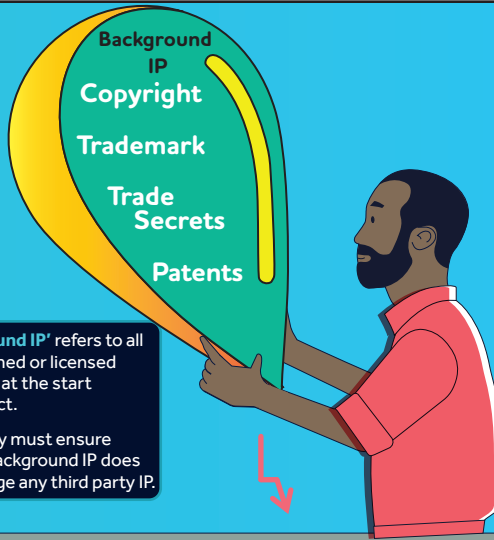


2 Any contract with the energy networks should record the Background IP, Foreground IP and 'Relevant Foreground IP'.

3 The project plan needs to be detailed enough to enable third parties to see if they need to use the Foreground IP that is generated by the Project.

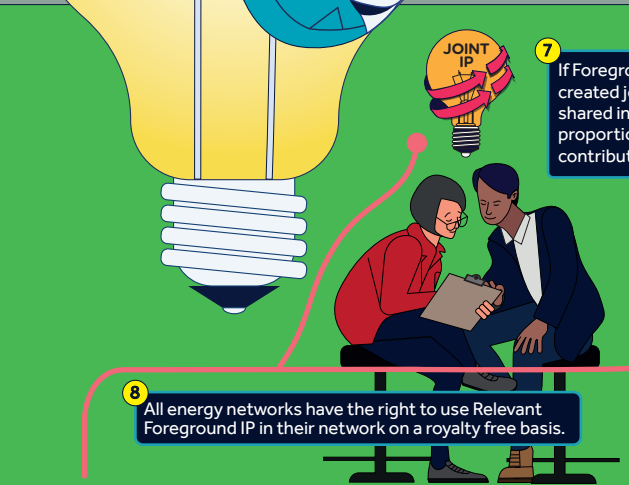
Energy networks must consider the long-term value to all consumers.

The Project consists of the research, development and demonstration of the method to implement the Foreground IP.



4 'Background IP' refers to all the IP owned or licensed to a Party at the start of a Project.

Each Party must ensure that its Background IP does not infringe any third party IP.

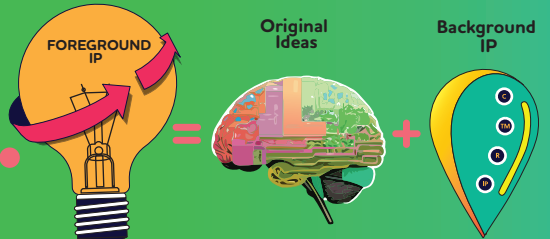


JOINT IP

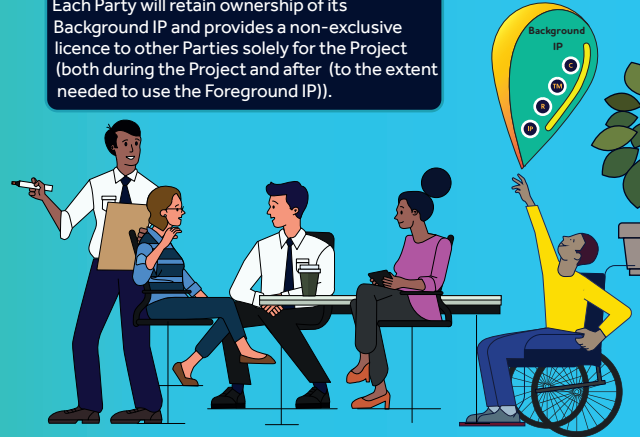
7 If Foreground IP is created jointly, it is shared in the proportion of contribution.

6 'Foreground IP' refers to the unique output of the Project.

Each Party will own the Foreground IP that they create.

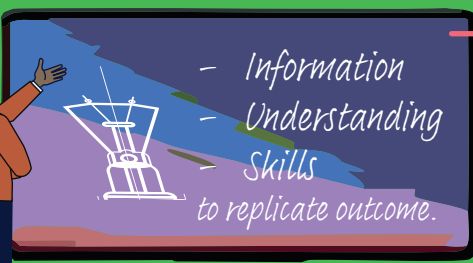


5 Each Party will retain ownership of its Background IP and provides a non-exclusive licence to other Parties solely for the Project (both during the Project and after (to the extent needed to use the Foreground IP)).



8 All energy networks have the right to use Relevant Foreground IP in their network on a royalty free basis.

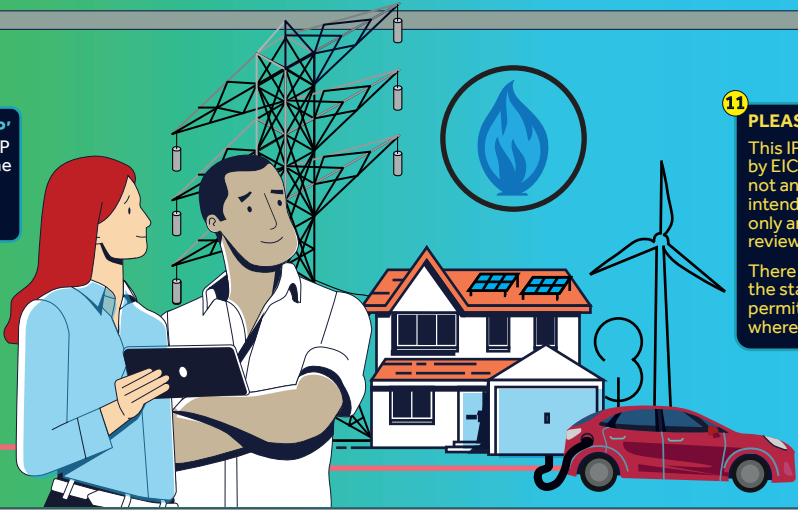
KEY AIM
= **KNOWLEDGE TRANSFER**
+ **PROTECT CONSUMERS AGAINST PAYING EXCESSIVELY FOR PRODUCTS FOR WHICH THEY HAVE CONTRIBUTED TO THE COST OF DEVELOPING.**



9 Knowledge and learning from the Project must be shared with third parties. This must enable a third party to reproduce / simulate the outcome of the Project. Knowledge dissemination is intended to reduce the cost, difficulty and time involved in similar projects.

RELEVANT FOREGROUND IP

10 'Relevant Foreground IP' means any Foreground IP needed to implement the method(s) developed / demonstrated as part of the Project.



11 PLEASE NOTE:
This IP Regime Overview is created by EIC to assist innovators, but it is not an official Ofgem resource. It is intended for reference purposes only and EIC recommends that you review the full NIA Guidance.

There can be some deviations from the standard IP regime, where permitted in the NIA Guidance or where approved by Ofgem.